

**Presbytery of Kiskiminetas
Stated Meeting – September 13, 2016
St. Benedict Presbyterian Church – Saint Benedict, PA**

7:00 PM **Evening Worship** – Led by Rev. Dr. Don Wilson and Rev. Marty Cartmell

*7:40 PM **Organization of Presbytery**

- A. Recognition of Elders and Pastors attending for the first time
- B. Announcements
- C. Sharing of Joys and Concerns

Reports of:

7:45 PM Stated Clerk

- A. Action on Provisional Minutes of the May 10, 2016 meeting
- B. Approval of Docket
- C. Enrollment of Corresponding Members
- D. Formation of Roll

7:50 PM Commission on Ministry (COM)

8:10 PM Cabinet

- Report from Oakwood AC
- SOP Revision for CPM - 1st read

8:15 PM Youth Triennium Report

8:25 PM Presbyterian Mission Team (PMT)

- Rwanda
- Disaster Response

8:55 PM GA Commissioners

9:10 PM Commission on Preparation for Ministry (CPM)

9:20 PM Presbytery Administration Team (PAT)

9:30 PM +New Business, Miscellaneous, Report of Moderator, Adjournment with prayer

*indicates Order of the Day

+Unless previously docketed, no items of new business shall be introduced following the first hour of the Presbytery meeting. Items of new business must be presented in writing to the Stated Clerk. Consideration of such items shall take place at the time docketed for new business. (M-1.05)

PLEASE NOTE THE FOLLOWING

Those Commissioners desiring to read the minutes of the meeting may do so at the Presbytery web page (www.kiskipby.org) by clicking on Presbytery Meeting Central and using the password. You will need the free Adobe Acrobat Reader to view them. If you do not know the password, contact the Stated Clerk or the Presbytery Office to obtain it. Those without Internet access may request a print copy of the minutes by calling the Presbytery Office.

Order of Worship for the Kiskiminetas Presbytery
St. Benedict Presbyterian Church
September 13, 2016

*Denotes "Please stand if you are able"

Prelude *"Holy Thy Name"* St. Benedict Choir

*Call to Worship:

(Adapted from PS. 51)

Leader: God has taken His place in the divine council;

All: In the midst of the Heavens God judges.

Leader: Give justice to the weak & the fatherless;

All: Maintain the rights of the afflicted & destitute

Leader: Rescue the weak & the needy;

All: Deliver them from the hands of the wicked.

Leader: O Lord arise & judge the earth;

All: For to You belong all the nations. All the nations will praise Your name.

*Opening Hymn: *"How Great Thou Art"* #4

*Prayer of Confession: **ALL: Hear us O god as we declare Your praises, for we know it is You who formed the earth, who gave us being, and who brought us together. By Your grace You call us your own. We are honored by Your love and Your care. Often we have forgotten that You call us Your children. We have failed to honor You as we should. We have forgotten to do the things You have instructed us to do, and we have made up unconvincing excuses when You confront us in our sin. Forgive our neglect of Your kingdom, and our failing to honor You with our words and our deeds. Help us to walk more faithfully in Your path. Help us to show our love for You and for our neighbors. In our Savior's name, Jesus Christ, we pray. Amen.**

*Assurance of Pardon

Scripture *Luke 10:25-37* New Testament

Sermon Rev. Dr. Don R. Wilson

Prayers of the People

*Closing Hymn: *"Take Time to be Holy"* #441

Singing Benediction: *"A Choral Benediction"* St. Benedict Choir

*Blessing/Charge

REPORT OF THE STATED CLERK – September 13, 2016

Report of the Commission to Install the Rev. Dr. Donald R. Wilson

The Commission established by the Presbytery of Kiskiminetas to Install Rev. Dr. Donald R Wilson as General Presbyter of the Kiskiminetas Presbytery met at the Dayton Glade Run Presbyterian Church in Dayton, PA on Sunday, May 15, 2016 at 2:45 p.m.

The following Commission Members were present: **Ruling Elders:** Sheila Wadding, CRE Dayton Glade Run (D1); David Larimer, First P.C. Clarion (D3); Kathleen Davis, CRE Faith P.C. (D1); Dr. Sara Crumm, Calvary P.C. (D2) **Teaching Elders:** Stephanie Weaver, Sligo PC (D3); David Koehler, Beechwoods and Sugar Hill (D3); Kathryn Ward Stear, Crete P.C. (D2)

A quorum of the Commission was present.

The Commission took action to invite and enroll as corresponding members the following persons:
Rev. Larry Greenslit, National Capital Presbytery and Rev. Susan Wonderland, Synod of the Trinity.

Based on the Presbytery Standing Rules, the Commission elected Rev. Stephanie Weaver as Moderator and Sara Crumm as Clerk of this Commission.

The Congregation was called to worship at 3:00 p.m. Rev. Larry Greenslit preached the sermon based on a text from Luke 7:1-10.

The Commission Moderator stated the proceedings of the Presbytery in preparation to the Installation and asked the Constitutional Questions to the candidate. Rev. Stephanie Weaver asked the Constitutional Questions to the congregation. These being answered in the affirmative, the candidate with prayer led by the Moderator was installed as General Presbyter of Kiskiminetas Presbytery.

R.E. Sara Crumm delivered the Charge to the Pastor Matthew 9:35-38.

At the conclusion of the service the newly installed General Presbyter made a brief statement and pronounced the Benediction. After the service the officers and members of the church came forward to their pastor and gave him an appropriate expression of cordial reception and affectionate regard.

Prior to the start of the worship service, the Commission approved their minutes, and was adjourned with the Benediction that closed the worship service.

Submitted by: Rev. Stephanie Weaver, Moderator of this Commission
Sara Crumm, Clerk of this Commission

Report of the Commission to Install the Rev. Dr. Jonathan Scanlon

The Commission established by the Presbytery of Kiskiminetas to Install The Rev. Dr. Jonathan Scanlon as Pastor of First Presbyterian Church of Clarion met at the Presbyterian Church in Clarion, PA on Sunday, July 10, 2016 at 2:30 p.m.

The following Commission Members were present: **Ruling Elders:** Kathy Larimer, Clarion; Ben Fitzgerald-Fye, Punxsutawney; Ron Alderton, Pisgah **Teaching Elders:** Stephanie Weaver, Sligo; R. James Dietrich, Pisgah/New Rehoboth; Brett Swanson, Punxsutawney; Christopher Belden, Elizabeth Presbytery, NJ

A quorum of the Commission was present.

The Commission took action to invite and enroll as corresponding members the following person: T.E. Rev. Dr. Christopher Belden, Pastor of Community Presbyterian Church in Mountainside, NJ and Moderator of Elizabeth Presbytery

Based on Presbytery Standing Rules, the Commission elected TE Weaver as Moderator and TE Swanson as Clerk of this Commission.

The Congregation was called to worship. TE Belden preached the sermon entitled "Eat Your Vegetables" based on a text from Matthew 28:16-20

The Commission Moderator stated the proceedings of the Presbytery in preparation to the Installation and asked the Constitutional Questions to the candidate. Ruling Elder Larimer asked the Constitutional Questions to the congregation.

With all Constitutional Questions answered in the affirmative, the candidate stood and with prayer led by TE Dietrich and the laying on of hands, the Commission Installed TE Scanlon as Pastor for the Clarion Presbyterian Church. The members of the Commission, the Presbytery, and Congregation came forward to offer the newly installed teaching elder a cordial reception and affectionate regard.

TE Swanson delivered the Charge to the Pastor and TE Weaver delivered the Charge to the Congregation.

An offering was taken for the Presbytery's Candidate Scholarship Fund.

At the conclusion of the service the newly installed teaching elder made a brief statement and pronounced the benediction. After the service the officers and members of the church came forward to their pastor and gave him an appropriate expression of cordial reception and affectionate regard.

Prior to the start of the worship service, the Commission approved their minutes, and was adjourned with the benediction that closed the worship service.

Submitted by: Brett Swanson, Clerk of this Commission

Task Group on Sessional Records Review – August 15, 2016

The Task Group on Sessional Records Review (composed of elders and pastors in District III) met in the Brookville Presbyterian Church on August 15, 2016 and took the following action:

- Examined and approved without exceptions the minutes of the following sessions: *Big Run; Brockway; Clarion; East Brady; Falls Creek/Beechwoods; Falls Creek/First; Fisher/Millcreek; Hawthorn; Knox/Edenburg; Marienville; Miola/Shiloh; New Bethlehem (examined 8/17); Parker/Concord; Punxsutawney; Punxsutawney/Pleasant Grove; Reynoldsville; Reynoldsville/Zion; Rimersburg; Sugar Hill; Summerville; Wilcox*
- Examined and approved with exceptions the minutes of the following sessions: *Brookville; Dagus Mines/Elkton; Ridgway*
- Examined and approved without exceptions the registers presented by the following: *Big Run; Brockway; Brookville; Clarion; Dagus Mines/Elkton; East Brady; Falls Creek/Beechwoods; Falls Creek/First; Fisher/Millcreek; Hawthorn; Knox/Edenburg; Marienville; Miola/Shiloh; New Bethlehem (examined 8/17); Parker/Concord; Punxsutawney; Punxsutawney/Pleasant Grove; Reynoldsville; Reynoldsville/Zion; Ridgway; Rimersburg; Sugar Hill; Summerville; Wilcox*
- Examined and approved with exceptions the registers of the following churches: *None*

- The following churches did not present records for review August 15th (arrangements made or will be made for their examination): *Clarion/New Rehoboth-Greenville; Coolspring; Corsica/Pisgah; Oliveburg; Sigel/Mt. Tabor; Sligo;*
- Five churches had both pastor and elder in attendance, twelve had one or more elders, and eight had the pastor.

Task Group on Sessional Records Review – August 16, 2016

The Task Group on Sessional Records Review (composed of elders and pastors in District II) met in the Calvary Church, Indiana on Tuesday, August 16, 2016 and took the following action:

- Examined and approved without exceptions the minutes of the following sessions: *Atwood; Arcadia; Blairsville; Cherry Tree; Clarksburg (examined 8/30); Clymer; Creekside/Center; Heilwood; Home/Washington; Indiana/Bethel; Indiana/Calvary; Kent/Jacksonville; Lewisville/Ebenezer; Marion Center/Gilgal; Marion Center/Marion; Northern Cambria/St. Pauls; Penn Run/Harmony; Rochester Mills; St. Benedict; Shelocta; Tunnelton; Willet/Plumcreek*
- Examined and approved with exceptions the minutes of the following sessions: *Black Lick; Homer City; Indiana/Crete; Saltsburg*
- Examined and approved without exceptions all Registers presented by the following: *Arcadia; Black Lick; Blairsville; Cherry Tree; Clarksburg (examined 8/30); Clymer; Creekside/Center; Home/Washington; Homer City; Indiana/Bethel; Indiana/Calvary; Indiana/Crete; Kent/Jacksonville; Lewisville/Ebenezer; Marion Center/Marion; Northern Cambria/St. Pauls; Penn Run/Harmony; Rochester Mills; St. Benedict; Saltsburg; Shelocta*
- Examined and approved with exceptions the registers of the following churches: *None*
- The following churches did not present records for review August 16th (arrangements made or will be made for their examination): *Plumville*
- Six churches had both pastor and elder in attendance, fifteen had one or more elders, and five had the pastor.

Task Group on Sessional Records Review – August 17, 2016

The Task Group on Sessional Records Review (composed of elders and pastors in District I) met in the Slate Lick Presbyterian Church on August 17, 2016 and took the following action:

- Examined and approved without exceptions the minutes of the following sessions: *Apollo; Clinton; Cowansville; Dayton/Concord; Dayton Glade Run; Elderton; Ford City/Appleby Manor; Ford City/Crooked Creek; Freeport; Freeport/Srader Grove; Goheenville; Kittanning/Faith; Kittanning/Grace; Kittanning/West Glade Run; Leechburg/Allegheny; Leechburg/Cross Roads Community; NuValley; Slate Lick; Spring Church/Boiling Springs; Templeton/Tidal; Worthington*
- Examined and approved with exception the minutes of the following sessions: *Templeton/Mt. Zion*
- Examined and approved without exceptions the registers presented by the following: *Apollo; Cowansville; Dayton/Concord; Dayton/Glade Run; Elderton; Ford City/Appleby Manor; Ford City/Crooked Creek; Freeport; Freeport/Srader Grove; Goheenville; Kittanning/Faith; Kittanning/Grace; Kittanning/West Glade Run; Leechburg/Allegheny; Leechburg/Cross Roads Community; NuValley; Slate Lick; Spring Church/Boiling Springs; Templeton/Mt. Zion; Templeton/Tidal; Worthington*
- Examined and approved with exceptions the registers of the following churches: *None*
- The following churches did not present Registers: *Clinton*
- Six churches had both pastor and elder in attendance; five had one or more elders, and seven had the pastor.

Records were found to be in good order and well maintained. Thank you to the Clerks of Session and Pastors for your good work all throughout the year. -- Marilyn Tully, Stated Clerk

Correspondence:

- “Proposed Amendments to the Constitution” booklet that was approved by the 222nd General Assembly (2016) is available by going to the following web link:

<http://www.pcusa.org/resource/ga222-proposed-amendments-constitution/>

These Proposed Amendments to the Constitution will be brought before all the presbyteries over the next few months for approval or non-approval.

- Rev. Doug Portz, our Regional Church Consultant for Board of Pensions/Benefits, has asked that the information that follows be shared in Kiski Presbytery communications to be sure that the word gets out.

“As you know the Board of Pensions has made a number of significant changes to the Benefits Plan and the way employee benefits are priced and structured. There have been many communications about the changes from the Board, but there are many churches that I have encountered which have not either heard or understood the actions all churches are required to do **by September 30**. Here is some helpful information.”

1. Before September 30th all churches will need to have the "Authorized Person" from their church (i.e. normally the treasurer, business manager, or chair of personnel who inputs salary information into Benefits Connect for billing purposes from the Board of Pensions), access Benefits Connect and input salary information for each employee and choose the benefits/classifications for all employees. Even if there is only one employee, e.g. the pastor, the authorized person from each church will need to fill in the information on Benefits Connect by September 30th. Once Benefits are chosen, an employer agreement would be created that would determine accurate billing.
2. Once benefits are chosen for employees, the employees and/or pastor will need to access Benefits Connect. Each employee will see only their information and the benefits offered them by their employer/church. Then, each employee and/or pastor will need to access Benefits Connect between October 17th and November 11th to choose which benefits they will select or waive from the benefits offered by their employer/church.

Here are several links that will help guide the process and help people and churches move forward.

2017 Benefits Plan Summary-

<http://www.pensions.org/AvailableResources/BookletsandPublications/Documents/pln-603.pdf>.

2017 Benefits Plan Employer Decision Support

Guide <http://www.pensions.org/AvailableResources/BookletsandPublications/Documents/pln-604.pdf>.

To access Benefits Connect go to www.pensions.org. and in the upper right side will be a Benefits Connect "log in".

For support call Member Services or Employer Services at 800-773-7752 or you can call your regional Church Consultant, Rev. Doug Portz, at 267-788-4962.

Rev. Dr. Douglas Portz, Church Consultant

Synods of the Covenant and the Trinity (excluding Philadelphia Presbytery)

800-773-7752 ext. 7455 -or- work cell: 267-788-4962

mail to: dportz@pensions.org

see us at <http://www.pensions.org>

Kiskiminetas Presbytery
Commission on Ministry Report
September 13, 2016

COM moves:

1. Approval of the call of Mr. Christopher McCloskey by the Brockway United Presbyterian Church, effective 10/9/2016 under these terms:
 - a. Cash Salary- \$45,000; Full use of manse with paid utilities
 - b. SECA supplement- \$4,475.25
 - c. Full medical, pension, disability and death benefit coverage under the Board of Pensions
 - d. Vouchered reimbursable expenses:
 - i. Travel mileage at IRS maximum allowable rate
 - ii. \$3,000 for continuing education
 - e. 4 weeks paid vacation
 - f. 2 weeks paid study leave
 - g. In the seventh year of service, the congregation will provide for a three-month Clergy Renewal Leave, continuing the salary and benefits for that period, and providing for pulpit supply in the pastor's absence.
2. Examination of Mr. McCloskey, on behalf of the Presbytery of Southern New England, for ordination as a Teaching Elder
3. Approval of Mr. McCloskey as an active member of Kiskiminetas Presbytery
4. Approval of the installation plans for Mr. McCloskey as Teaching Elder of the Brockway United Presbyterian Church on 10/23/2016 at 3:30pm; Commission members will be: Moderator Rev. Stephanie Weaver, Rev. R. James Dietrich, Rev. Nathan Royster, Ruling Elders Dave Steele (Brockway), Mary Lou Riegel (Ridgway)
5. Approval for supply preachers assigned by the Presbytery to receive travel reimbursement from the church served at the IRS maximum allowable rate effective 1/1/2017. Honorariums will remain \$100 for one church; \$120 for yoked.
6. Approval of Rev. Bruce Shannon as moderator of Center Presbyterian Church Session

For information:

1. COM concurred with Rev Jeff Denlinger's request and acted on behalf of the Presbytery to restore Rev. Denlinger to active membership as Teaching Elder member of Kiskiminetas Presbytery (D12.0104i); grant his request to lay aside his ordination vows (G2.0507); and transfer his membership to St. Andrew Lutheran Church of Pittsburgh (G2.0507).
2. COM dismissed Rev. David Caves and Rev. Richard Cassel from their work meeting and ministering to Rev. Denlinger.
3. **Reminder to churches:** To enable employees to enroll for 2017 benefits, employers must complete all modeling and submit an Employer Agreement through Benefits Connect by September 30. The completed Employer Agreement will enable employees to elect benefits online, using Benefits Connect, during annual enrollment in the fall. Here's what employers need to do:
 - Log on to Benefits Connect.
 - Choose Employer Agreement at the top of the page.
 - Read all information and follow the step-by-step directions carefully.
 - Model as many scenarios as needed -- each model will be saved automatically.
 - Decide on final benefits selections and costs for 2017.
 - Submit selections through Benefits Connect to create the Employer Agreement by September 30.

Where to go for help:

- Link to the web tutorial [Employer Decision Support for the 2017 Benefits Plan](#).
- Refer to the [Employer Decision Support Guide](#).
- Log on to Benefits Connect and search for more information in Resources & Support.
- Call Employer Services at 800-773-7752 (800-PRESPLAN).
- Email memberservices@pensions.org.

Christopher J. McCloskey

I was born in Cincinnati, OH to two Michiganders, Tim and Jean. My father, Tim, works in regulatory in the pharmaceutical industry and my mother, Jean, works in an elementary school. At the age of five, my family and I moved to Guilford, CT, a suburb of New Haven where I am a member and ordained Ruling Elder of First Presbyterian Church in New Haven. I am the eldest of three children. Andrew is currently serving as a Peace Corps volunteer in Mozambique. Daniel is currently completing high school and will enroll at the University of Connecticut in the fall. I, like my father and brothers, am a proud Eagle Scout, and a lifelong member of the Boy Scouts of America and the Order of the Arrow, Scouting's National Honor Society. In the remainder of my free time in high school, I devoted myself to singing, dancing and theatre.

I received my call to enter the ministry in high school, but decided against a religious education and pursued a Bachelor's degree in Psychology at Clark University in Worcester, MA. By the time I had graduated in 2013, I picked up an additional major in Philosophy and a minor in Ancient Civilizations (focused on Ancient Jewish culture). Like in high school, I spent the majority of my free time in college ballroom dancing, singing in multiple choirs and being involved with the theatre arts. I graduated from Clark Summa Cum Laude and was inducted into four honor societies including Phi Beta Kappa.

During my time at Clark and influenced greatly from my internship at the Connecticut Hospice, I came to accept my call to ministry and happily enrolled at Princeton Theological Seminary in the fall of 2013 and will graduate on May 21st of 2016. I completed my yearlong church internship at Plainsboro Presbyterian Church in Plainsboro, NJ. This time cemented in my mind that I am called to parish ministry as a solo pastor. I also completed a summer CPE internship at Bridgeport Hospital in Bridgeport, CT. I am currently under care of the Presbytery of Southern New England where I am Certified Ready to Receive a Call. I am very dedicated to the PCUSA. I am the grandson and nephew of Presbyterian pastors and I have served as either a delegate or commissioner at every level of church government including work on a national commission.

I will soon be engaged to the love of my life, Susan, whom I dated all throughout my time at Clark University and into Seminary. Susan is a certified Physical Therapist, a lover of antiques, cats and adventure.

Statement of Faith

1
2
3
4
5
6
7
8
9
10
11
12
13
14
15
16
17
18
19
20
21
22
23
24

I believe that God is mystery and in many ways beyond our knowing. Yet this same God is also profoundly personal choosing time and time again to reveal Godself in love. In creation, our Creator formed matter in the palm of a caring hand for the sake of love. God made the world in harmony and set humanity as its stewards. Yet, humanity, the special bearers of our Creator's image, turned away from God and recoiled from God's covenant of love and peace. But God is steadfast and abounding in love. God yearned for creation to return to God in love and so chose to limit Godself and take on the form of a human being. In doing so God, in Jesus Christ, led a life of love, setting the example for humanity, calling all back to God, and preparing them for God's ever approaching kingdom.

This life of love led Jesus, our Savior, to the cross. There suffering pain and death for the sins of the world. Revealing that we are so loved that God would give God's very life for God's beloved creation. So very loved are we that God chooses to see us as clean despite living sinful lives. And so this Jesus was raised from the dead proving God's ultimate triumph over sin and death. This Jesus ascended into heaven, but did not abandon his beloved, sending his Spirit.

The Holy Spirit is the herald of God's continuing love in the world. The Spirit inspires, challenges, and sustains. The Spirit calls us to welcome all regardless of gender, race, creed, ethnicity, or sexual orientation. It calls us to live lives of radical love and hospitality even when it makes us profoundly uncomfortable. We are called to do so in response to the love God has already shown, is showing and will show the world. We are called to turn the values and norms of this world upside down and love all without hesitation.

25 This Triune God calls us to live in the brokenness of the world. We, the Church, are
26 called to walk with the other on their difficult paths and proclaim the Good News of the
27 Gospel. We are called to prepare a way for the Lord even in the wilderness. We are called
28 to love and to opposed fear, for there is no fear in love.

29 God has chosen to revel Godself in Holy Scripture, both Old and New. The Old
30 Testament proclaims God's goodness in Creation, covenant, and liberation. This Testament
31 also points people of faith towards the coming of the Messiah. The New Testaments fulfils
32 the prophecies of the Old Testament. It preserves the life and works of Jesus, the Christ. It
33 proclaims the Good News of salvation through the sacrifice of this Savior. It then
34 commissions all believers to share the Good News and calls all of humanity back to God.

35 The New Testament also commissions those who love Christ to go out into the world
36 and baptize. This sign and symbol of incorporation into Christ's Church is open to all who
37 confess faith in Christ and to children who are yet unable to confess this faith remembering
38 God's immense grace. This baptism is sustained and remembered in the sacrament of
39 communion. In this meal, we are called to remember Christ's sacrifice and victory. We are
40 called to recommit ourselves to our faith and be emboldened to serve the world according to
41 God's will. We are called to experience Christ's presence in our lives.

42 In all things, we are called to respond in gratitude to a God who loved us first, knew
43 us first and claimed us as God's own. We are called to be dependent on the will of God and
44 interdependent with all of humanity and God's creation. We are called to worship God and
45 extend grace to one another taking the example of grace that God first extended to us. We
46 must live our lives dedicated to the Creator, Savior and Sustainer knowing that nothing can
47 ever separate us from the wellspring of love, which is our Triune God.

June 7, 2016 – Cabinet Meeting

Kiskiminetas Presbytery Cabinet met in the Presbytery Office in Yatesboro, PA on June 7, 2016 at 5:00 p.m. with dinner. Meeting was called to order with devotion from Matthew 28:16 and prayer led by Rev. Donald Wilson, G.P.

Members Present: *Teaching Elders* - Jim Dietrich, Emily Koehler, Tim Monroe, Brett Swanson, Dana Wilmot *Ruling Elders* - Sara Crumm, Kathy Davis, Sandy Gandolfi, Bill John, Debbie McCanna, Dave Murphy, Jim Ray, Marilyn Tully

Members Excused: Stephanie Weaver, Brett Hoover, Tammy Goble, Nancy Schrecengost

Ex-Officio Member Present: Rev. Donald Wilson, G.P.

PAT - Dana Wilmot

2017 proposed budget presented and reviewed. Line item for 2017 Moderator's Expenses will be increased from \$1,000 to \$2,000 in order to cover Moderator training offered by OGA in Louisville.

Motion made and carried to recommend a \$1.00 increase in Presbytery per capita for 2017 and to recommend budget as amended be presented for first read at the September meeting of Presbytery.

PMT – Emily Koehler

Motion from committee made and carried for Peacemaking funds to be used in 2017 to sponsor three workshops by district on drug addiction. Idea is to bring people together on a Saturday for a workshop on drug addiction on a faith perspective. Resource people could be from Clarion / Armstrong / Indiana drug programs.

Rwanda Partnership 10th Anniversary Celebration event to be held Saturday, September 17th at the Calvary/Indiana church.

More info to come regarding Partnership Sunday when Kiski churches will use same liturgy as our partner churches in Rwanda.

Hibbs – PMT and PAT are working together on a revision for an updated policy.

MST – Brett Swanson

CPM currently comprised of four members (2 each TE/RE) all males. Given current people coming into the CRE program CPM would like to add a fifth member to the CPM (preferably a female T.E.) to round out ability to guide folks that come in and to have a tie breaking vote if needed.

Motion made and carried to approve CPM's request to amend Standard Operating Procedures to add a fifth member; to be brought before Presbytery for 1st read at the September meeting with 2nd read and vote in November.

Request for Presbytery Endorsement

A document titled "A Declaration on Welcoming Refugees" that was unanimously adopted by Pittsburgh Presbytery at its meeting on December 10, 2015 was shared and discussed. *Motion* made and carried to ask Presbytery for endorsement at the November 12, 2016 meeting.

G.P. - Don Wilson "First Impressions"

Has visited five churches and commented on warmth and hospitality.

Ease of finding documents/resources a stumbling point.

Training program for CRE's – how do we make this work better – how to make it easier.

Information flow – churches don't know what is going on – how do we get it to the people in the pews.

Education - what is the impact of giving.

Can we do some training on how to lead a meeting, resolve conflict, lead worship.

G.P. asked of us ... what we would like to have looked at.

- Stewardship – financials are tough in some congregations
- Information works both ways – positive for some folks / negative for others.
- Education – Education – Education (dialog)
- Minutes for Mission
- FB group – giving us the opportunity to share our good ideas.
- Webpage update with Rob Donaldson – get two or three of us to look at the webpage to get info on there.
- CRE training - ask each Kiski church to discern if there is a R.E. willing to learn and serve communion in the area. Makes good use of strong in faith and strong in ability. Commission for a specific service and must bring in COM to coordinate. In-house training? We need the infrastructure but the talent is here.

Get together after July – get those people with an interest – take that energy with Don and get some of these things going.

CLERK – Marilyn Tully

Motion made and carried to accept the April 12, 2016 Cabinet meeting minutes.

Host Churches to-date for 2017 Presbytery meetings:

February – Dayton Concord (D1)

May – East Brady (D3)

September – Trinity (D2) celebrating 50th anniversary of Clarksburg and Elders Ridge merger

November – (open/host needed)

Motion made and carried to adjourn at 7:26 p.m. Kathleen Davis closed us in prayer.

Marilyn Tully, Stated Clerk

Next Presbytery meeting – Tuesday, September 13, 2016 at 7 p.m. at St. Benedicts P.C.

Next Cabinet meeting – Tuesday, October 11, 2016 at 5 p.m. at Presbytery Office.

Proposed change to Kiskiminetas Standard Operating Procedures:

Increase number of members to serve on Commission on Preparation for Ministry (CPM) from 4 to 5.

Presbytery 1st reading 9/13/16 with 2nd reading and vote 11/12/16

M-3.04b. **Commission on Preparation for Ministry**

The Presbytery shall fulfill its responsibility for the recruitment and preparation of individuals for service as teaching elders and commissioned ruling elders through the Commission on Preparation for Ministry which shall be composed of ~~two~~ **three** ruling elders and two teaching elders. (see Manual of Administrative Operation's detailed responsibilities)

Nominating Committee
COMMITTEE PREFERENCE FORM
[For Ministers and Church Members]

The Presbytery Nominating Committee works to be a good steward of the presbytery's human resources. It recognizes that people serve more effectively when they work in an area in which they are gifted and/or have an interest. Listed below are opportunities for service at the Presbytery levels. In each category, please note and rank in order your choice for service. Please return this form as soon as possible to **the Presbytery Office at: P.O. Box 339, Yatesboro, PA 16263.** Thank you.

Name _____

Address _____

Phone Number _____

Church _____

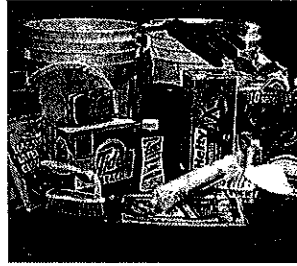
Please check one Teaching Elder Ruling Elder Member

Presbytery Service

- Ministry Resource Team
- Presbytery Mission Team
- Ministry Support Team (COM)
- Ministry Support Team (CPM)
- Presbytery Administration Team
- Nominations
- Committee on Representation
- Permanent Judicial Commission
- Self-Development of People Task Group (Under Presbytery Mission Team)
- Presbytery Cabinet (at-large member)

Kiskiminetas Presbytery Fall 2016 Disaster Response

Clean-Up Buckets for Presbyterian Disaster Assistance



Summer floods in West Virginia, Mississippi, & Louisiana and damage caused by Hurricane Hermine, have severely cut into the surplus of Clean-Up buckets in warehouses. The Disaster Response Task Group of Kiskiminetas Presbytery is asking churches to do a fall campaign in your church to assemble Clean-Up Buckets and bring them to the Saturday, November 12, 2016 Presbytery meeting at the Worthington Presbyterian Church. The Disaster Response Task Group will be on hand to load a truck which will deliver the buckets to a regional trucking company for shipment. Approximate cost to put together each bucket is \$75.00.

If you have any questions please contact Gary or Lisa Lyon at 724-845-1901 or by e-mail at gary@crcpc.org or lisa@crcpc.org.

- One five-gallon bucket with resealable lid (*if bucket has been used, clean well but do not use if it has held chemicals of any kind.*)
- Four scouring pads
- Seven sponges, including one large
- One scrub brush
- Eighteen reusable cleaning towels (*e.g. Easy Wipes*)
- One 50 oz. or two 25 oz. bottle(s) of liquid laundry detergent
- One 16-28 oz. bottle of liquid disinfectant dish soap
- One 12-16 oz. bottle of household cleaner that can be mixed with water (no spray bottles)
- One package of 48-50 clothespins
- Clothesline, two 50 ft. or one 100 ft.
- Five dust masks
- Two pairs non-surgical latex gloves
- One pair work gloves, cotton with leather palm or all leather
- 24-28 heavy duty or contractor type 30-45 gallon trash bags on a roll and removed from carton
- One 6-9 oz. bottle of non-aerosol insect repellent

All cleaning items must be new— all liquid items must be capped and securely tightened. Place all items into the bucket, making sure they are packed securely to avoid damage during shipment. Snap the lid on tight and seal with packing tape.

There is a processing fee for each bucket of \$3.00 which helps to cover the cost of transportation from the warehouse to disaster areas. Please make checks out to the **Presbytery of Kiskiminetas** in the amount of \$3.00 per bucket. Checks may be mailed to the Presbytery Office or given to the Disaster Response Task Group at the November 12th Presbytery meeting.

***Do not enclose money inside the kits or in the shipping boxes.**

Thank you to Freeport Transport Industries and their Chief Financial Officer, Donald Smetanick, for arranging and covering any shipment cost of these buckets on our behalf.

Presbyterian Disaster Assistance Summer Flooding

West Virginia

In early June heavy rains across West Virginia brought major destruction in 19 different counties. Last week the West Virginia Council of Churches reported that 26 people died and over 3,000 homes were destroyed.

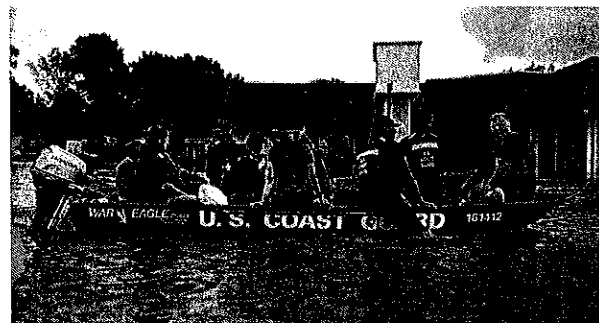


One of the main mission endeavors of the Presbytery of West Virginia is the West Virginia Ministry of Advocacy and Workcamps. (WVMAW). Gary Lyon has been in contact with Executive Director Joan Stewart who is encouraging church groups from Kiskiminetas Presbytery to come and help rebuild West Virginia for a weekend or for a week. For most of our Presbytery it is only a 3 to 6 hour trip south!

If you are interested in trying your hand at a hands-on work trip please contact WVMAW by visiting their website at <http://wvmaw.org/>. From mid-November through March 30, 2016 the site is closed because of West Virginia's topography. If you'd like help on the nuts and bolts of putting together a work trip please contact Gary (gary@crpc.org) or Lisa (lisa@crpc.org) Lyon and they'll either help you directly or turn you over to one of the members of the Kiskiminetas Presbytery Disaster Response Task Group in your own backyard.

Louisiana

Mid-August found 10-12 inches of rain falling on Louisiana and Mississippi. There have been 13 reported deaths and thousands of homes damaged and destroyed.



The Presbytery of Southern Louisiana is reaching out with their extensive experience in flood recovery and teaming with the Presbyterian Disaster Assistance to help coordinate rebuilding efforts. Currently assessments are being done on properties by federal, state, local, and church agencies. PDA will be opening a Long Term Recovery Center for volunteer work teams to use as a base in the coming months.

Financial Gifts for all 2016 National Disasters through the Presbyterian Church USA

Financial Gifts are being accepted by the Presbyterian Church U.S.A. to combine with the One Great Hour of Sharing Offering for use in these designated areas and more. Financial support for relief efforts can be designated to DR000191. Churches can find out more information about how to directly send their gifts by going to the following URL:

<https://pma.pcusa.org/donate/make-a-gift/gift-info/DR000191/?appeal=PDA&package=DAWeb>

Spring 2016 Kiskiminetas Presbytery Work Trip

The Disaster Response Task Group of Kiskiminetas Presbytery is planning a spring 2017 work trip the week of April 23-29. Details concerning this trip will be shared at the November Presbytery meeting in Worthington, PA. No reservations will be accepted for this trip at this time!

2017 Proposed Budget						
7/7/16 Draft						
				Proposed		
				2015	2016	2017
				Actual	Budget	Budget
PER CAPITA & ADMIN INCOME						
PRESBY PER CAPITA INC						
	Presby Per Capita	124,556.75		154,712.00	142,690.00	142,416.00
	Presby Designated Per Capita	6,722.85				
	Presby Prior Yr Per Capita	155.73		1,000.00	1,000.00	1,000.00
Total PRESBY PER CAPITA INC		131,435.33		155,712.00	143,690.00	143,416.00
ADMINISTRATIVE INCOME						
	ARIN Early Intervention Program	5,713.36		5,100.00	6,865.00	7,089.00
	Calendars/Books of Order	576.00				
	Interest Income - Elderton Bank	824.82		1,000.00	1,000.00	800.00
	Reimb of Admin Exp-Design. Fund	1,731.91			2,000.00	2,000.00
	PA child abuse, PA Criminal Rec	170.00				
Total ADMINISTRATIVE INCOME		9,016.09		6,100.00	9,865.00	9,889.00
INVESTMENT INCOME						
	New Covenant Mutual Funds	112,771.88			2,000.00	10,000.00
	Oikocredit Annual Dividend	210.80				200.00
	Presby Investment Interest	522.54				500.00
	INVESTMENT INCOME - Other			5,500.00		
Total INVESTMENT INCOME		113,505.22		5,500.00	2,000.00	10,700.00
INVESTMENT CHANGE IN FMV		(120,851.36)				0.00
Total PER CAPITA & ADMIN INCOME		133,105.28		167,312.00	155,555.00	164,005.00
PER CAPITA & ADMIN EXPENSE						
ADMINISTRATIVE EXPENSES						
GENERAL PRESBYTER						
	Salary				31,620.00	32,252.40
	Housing				24,000.00	24,480.00
	Social Security (addl wages)				4,255.00	4,340.03
	Medical Deductible Reimb				1,669.00	1,702.38
	Pension/Major Medical Dues				20,337.00	20,707.33
	Death/Disability Coverage				573.00	600.00
	Continuing Education				850.00	850.00
	Professional Expense Reimb				850.00	850.00
	Travel				6,000.00	6,000.00
	GA attendance/denom mtgs				2,000.00	1,000.00
Total GENERAL PRESBYTER					92,154.00	92,782.13
ADMIN ASSISTANT/OFFICE MANAGER						
	Office Manager Salary	39,520.08		39,520.00	40,706.00	33,945.60
	Medical Insurance Reimbursement	3,840.00			3,955.00	0.00
	Admin/Office Mgr Cont Education			250.00	250.00	250.00
Total ADMIN ASSISTANT/OFFICE MANAGER		43,360.08		39,770.00	44,911.00	34,195.60

		2015	2015	2016	2017
		Actual	Budget	Budget	Budget
OFFICE/RES CTR COORDINATOR					
	Office/Res Ctr Salary	29,743.93	29,744.00	30,636.00	31,248.72
	Medical Insurance Reimbursement	1,920.00		3,955.00	4,034.10
	Office/Res Ctr Cont Education		250.00	250.00	250.00
	Total OFFICE/RES CTR COORDINATOR	31,663.93	29,994.00	34,841.00	35,532.82
BOOKKEEPER					
	Contract Bookkeeper Services	600.00		5,000.00	2,400.00
	Bookkeeper Salary	10,596.50	24,102.00	16,068.00	0.00
	Total BOOKKEEPER	11,196.50	24,102.00	21,068.00	2,400.00
CUSTODIAN					
	Custodian Wages	5,683.71	5,684.00	5,854.00	5,971.08
	Custodian Wages-ARIN	1,448.25		1,640.00	1,672.80
	ARIN clean & maint. 1099 wages	126.50			
	Total CUSTODIAN	7,258.46	5,684.00	7,494.00	7,643.88
OFFICERS OF THE PRESBYTERY					
	Stated Clerk Salary	4,789.68	4,790.00	4,933.00	5,031.66
	Asst. Stated Clerk Salary	1,545.12	1,545.00	1,591.00	1,622.82
	Recording Clerk's Salary	480.00	650.00	650.00	650.00
	Treasurer	150.00			1,200.00
	Leadership Team Travel & Expens	1,117.09	5,000.00	500.00	0.00
	Professional Consultants	11,026.71	37,000.00	5,000.00	3,000.00
	Moderator's Expenses		2,000.00	1,200.00	2,000.00
	Stated Clerk Exp, Conf, GA	1,402.38	4,000.00	3,800.00	3,000.00
	Asst. Stated Clerk Exp, Conf	0.00	0.00	400.00	400.00
	Total OFFICERS OF THE PRESBYTERY	20,510.98	54,985.00	18,074.00	16,904.48
	EMPLOYER SH SOCIAL SECURITY TAX	7,628.38	8,061.00	8,797.00	6,481.60
	ADMIN COSTS ALLOC TO MISSION	(43,768.00)	(43,768.00)	(88,374.00)	(82,506.00)
FACILITY COSTS					
	Electric	3,615.62	3,500.00	3,500.00	3,700.00
	Heating	3,427.32	5,000.00	5,000.00	5,000.00
	Water & Sewage	1,106.06	1,100.00	1,100.00	1,200.00
	Trash Collection	710.31	1,400.00	1,400.00	780.00
	Cleaning Supplies	18.15	200.00	200.00	200.00
	Facility Maintenance	3,743.64	2,500.00	5,000.00	5,000.00
	Lawn Care/Snow Removal	2,165.65	2,000.00	2,000.00	2,100.00
	Real Estate Taxes	26.63			30.00
	Total FACILITY COSTS	14,813.38	15,700.00	18,200.00	18,010.00
OFFICE EXPENSES					
	Calendars/Books Of Order Expens	1,961.50			500.00
	Computer Maintenance	2,195.00	3,000.00	500.00	500.00
	Computer Software Upgrades	3,285.34	3,800.00	500.00	3,500.00
	Copier Lease	3,658.86	4,000.00	4,000.00	4,000.00
	Copier/Duplicator Expenses	3,779.96	4,200.00	4,500.00	4,500.00
	Equipment	4,066.34	3,000.00	1,000.00	3,000.00

	2015	2015	2016	2017
	Actual	Budget	Budget	Budget
Miscellaneous	759.55	1,500.00	1,500.00	1,000.00
Office supplies, paper, etc.	5,071.15	6,000.00	5,000.00	5,000.00
PA child abuse, PA Criminal Rec	1,417.25			0.00
Postage	3,290.31	3,800.00	3,500.00	3,500.00
Quickbook Payroll Fees	120.78	230.00		120.00
Telephone & Internet Connection	3,151.06	3,700.00	3,000.00	2,400.00
Web Hosting	1,052.40	260.00	600.00	600.00
Total OFFICE EXPENSES	33,809.50	33,490.00	24,100.00	28,620.00
Total ADMINISTRATIVE EXPENSES	126,473.21	168,018.00	181,265.00	160,064.51
CORPORATE EXPENSES				
Audit	4,560.65	4,350.00	3,000.00	4,700.00
Legal Counsel Expense	500.00	500.00	500.00	500.00
Insurance (Comp, Expanded cov)	4,004.04	6,200.00	4,200.00	4,200.00
Workers' Compensation Insurance	1,079.96	1,200.00	1,200.00	1,200.00
Total CORPORATE EXPENSES	10,144.65	12,250.00	8,900.00	10,600.00
MISC EXPENSES				
Loan Forgiveness	1,800.00	0.00	0.00	0.00
Total MISC EXPENSES	1,800.00	0.00	0.00	0.00
PRESBY CABINET, COMMITY, TASK GRP				
COM-Commission on Ministry	1,373.79	2,500.00	2,000.00	1,800.00
Committee on Representation		100.00	100.00	100.00
MRT-Congregational Ministries	1,731.91	250.00	250.00	250.00
PMT-Diaconal Ministries Comm.	95.91	350.00	250.00	250.00
Docket Committee	88.31	200.00	100.00	100.00
Gen Pres Search Expenses	570.12			0.00
Nominating Committee	62.91	200.00	200.00	150.00
Permanent Judicial Commission		150.00	150.00	150.00
CPM-Preparation for Ministry	367.00	400.00	250.00	250.00
PAT-Presby Administration Comm	1,162.40	500.00	350.00	500.00
Discernment Teams/Admin Comm			350.00	0.00
Presbytery Cabinet	2,215.52	2,000.00	2,000.00	2,000.00
Presbytery Meetings Host Church	300.00	400.00	300.00	300.00
Presby Meeting Travel/Meals	254.56			250.00
Total PRESBY CABINET, COMMITY, TASK GRP	8,222.43	7,050.00	6,300.00	6,100.00
Total PER CAPITA & ADMIN EXPENSE	146,640.29	187,318.00	196,465.00	176,764.51
NET PER CAPITA & ADMIN INCOME OVER EXPENSE	(13,535.01)	(20,006.00)	(40,910.00)	(12,759.51)

		2015	2015	2016	2017
		Actual	Budget	Budget	Budget
PRESBYTERY MISSION INCOME					
MISSION INCOME					
	Presby Unified Mission	112,209.02	126,000.00	152,760.00	135,000.00
	Presby Prior Yr Unified Mission	94.00			
	Presby Design Miss	23,906.47	15,000.00	5,600.00	25,000.00
	Nondesignated Mission Income	100.00			
	Reimb Mission Exp-Design. Funds	5,358.89			6,500.00
	Total MISSION INCOME	141,668.38	141,000.00	158,360.00	166,500.00
CONGREGATIONAL MINISTRIES COMMI					
	Congregational Ministries Comm	183.00			
	Resource Center Income/Reimb	345.53			
	Total CONGREGATIONAL MINISTRIES COMMI	528.53			
	Total PRESBYTERY MISSION INCOME	142,196.91	141,000.00	158,360.00	166,500.00
PRESBYTERY MISSION EXP					
	MISSION SALARIES ALLOC FR ADMIN	43,768.00	43,768.00	88,374.00	82,506.00
PMT-DIACONAL MINISTRY & MISSION					
	Arcadia	5,000.00	5,000.00	5,000.00	5,000.00
	Christian Assoc. of SW PA	2,000.00	2,000.00	2,000.00	2,000.00
	Emergency/Local Disaster Aid		500.00	500.00	500.00
	New Ministry & Program Dev		1,000.00	1,000.00	500.00
	Presbyterian Media Mission	1,500.00	1,500.00	1,500.00	1,500.00
	Presbyterian Senior Living	10,000.00	10,000.00	5,000.00	5,000.00
	Presbytery Spons Mission Trip		4,000.00	2,000.00	4,000.00
	Prison Ministry		200.00	200.00	200.00
	Rwanda/Kiski Presby Partnership	8,428.76	10,000.00	10,000.00	10,000.00
	State Park Ministry	5,000.00	5,000.00	5,000.00	5,000.00
	Truck Stop Ministry	10,000.00	10,000.00	10,000.00	10,000.00
	Wee Kirk Conference Underwrite	500.00	500.00	500.00	500.00
	Total PMT-DIACONAL MINISTRY & MISSION	42,428.76	49,700.00	42,700.00	44,200.00
MRT-CONGREGATIONAL MINISTRIES					
	Camp Board Operating Funds	17,000.00	17,000.00	10,000.00	10,000.00
	Church Growth & Leadership		1,500.00	1,500.00	3,000.00
	Enrichment Program Scholarships	600.00	900.00	1,000.00	850.00
	Resource Center Equipment	413.98	500.00	400.00	500.00
	Resource Center Operations	380.00	700.00	600.00	600.00
	Resources	2,271.57	3,000.00	3,000.00	3,000.00
	Youth Triennium Expense		1,000.00	1,000.00	0.00
	Total MRT-CONGREGATIONAL MINISTRIES	20,665.55	24,600.00	17,500.00	17,950.00
COM-COMMISSION ON MINISTRY(MST)					
	Emergency Pastor's Aid Fund	2,370.00	3,000.00	3,000.00	3,000.00
	First Call Teaching Elders/CRE	157.73	600.00	500.00	1,000.00

	2015	2015	2016	2017
	Actual	Budget	Budget	Budget
New Minister Orientation		450.00	250.00	500.00
Total COM-COMMISSION ON MINISTRY(MST)	2,527.73	4,050.00	3,750.00	4,500.00
CPM-COMM ON PREP MINISTRY(MST)				
C.R.E. Training		750.00	1,500.00	1,500.00
Seminary Student Aid Expense		1,000.00	1,000.00	1,000.00
Total CPM-COMM ON PREP MINISTRY(MST)		1,750.00	2,500.00	2,500.00
Total PRESBYTERY MISSION EXP	109,390.04	123,868.00	154,824.00	151,656.00
NET PRESBYTERY MISSION INCOME OVER EXPENSE	32,806.87	17,132.00	3,536.00	14,844.00
SUMMARY:				
Total Admin Income Budget	133,105.28	167,312.00	155,555.00	164,005.00
Total Admin Expense Budget	<u>(146,640.29)</u>	<u>(187,318.00)</u>	<u>(196,465.00)</u>	<u>(176,764.51)</u>
Net Difference	(13,535.01)	(20,006.00)	(40,910.00)	(12,759.51)
Total Mission Income Budget	142,196.91	141,000.00	158,360.00	166,500.00
Total Mission Expense Budget	<u>(109,390.04)</u>	<u>(123,868.00)</u>	<u>(154,824.00)</u>	<u>(151,656.00)</u>
Net Difference	32,806.87	17,132.00	3,536.00	14,844.00
Overall Difference	19,271.86	(2,874.00)	(37,374.00)	2,084.49
Per Capita:		2015	2016	2,017.00
Presby		17.78	18.78	19.78
Synod		2.20	2.30	2.30
GA		<u>7.07</u>	<u>7.12</u>	<u>7.50</u>
Total		27.05	28.20	29.58
**This is an increase of \$1.00 or 5.3% (number of members decreasing 2.81% = 53 cents of \$1 increase)				
***This is an increase of \$1.38 or 4.89% (number of members decreasing 2.81% = 79 cents of \$1.38 increase)				
Mission Allocation:				
Presby		52%	57%	57%
Synod		16%	12%	12%
GA		<u>32%</u>	<u>31%</u>	<u>31%</u>
		100%	100%	100%
By action of Cabinet, only amounts received for Synod & GA per capita will be remitted .				



RESOURCE CENTER

P.O. Box 339, Yatesboro, PA 16263 - Phone: (724) 783-7196
Email: carolm@kiskipby.org ~ Online at www.kiskipby.org
Hours: Monday through Friday, 8:30 a.m. to 4:30 p.m.
Resource Center Coordinator - Carol Mock



CLAIMING RESURRECTION IN THE DYING CHURCH: Freedom Beyond Survival (BK 1BD 162)

How do you minister faithfully to a congregation that is in decline? While many congregations struggle with trying to find the key to regrowth, Pastor Anna Olson suggests that the answer may actually be to accept and embrace this moment for what it is. This resource helps pastors recognize that, while the congregation might be going away, the community of which it is a part is still very much alive.

HOW JESUS SAVED THE WORLD FROM US: 12 Antidotes to Toxic Christianity

(BK 8AA 176) Christianity has always been about being saved. But today what Christians need saving from most is the toxic understanding of salvation we've received through bad theology. The loudest voices in Christianity today sound exactly like the religious authorities who crucified Jesus. This is a book for Christians who are troubled by what we've become and who want Jesus to save us from the toxic behaviors and attitudes we've embraced.



LAST CALL: From Serving Drinks to Serving Jesus (BK 8AX 174) Jerry Herships, former altar boy who had dreamed of making it big in show biz, tended bar to make ends meet as he worked gigs in comedy and game shows, looking for his big break. After giving up the dream and leaving Los Angeles, he found his way back to the church and discovered God calling him to ministry--but not just any ministry. Now he leads After Hours Denver, a bar church where people worship with a whiskey in their hand and make peanut butter and jelly sandwiches to serve Denver's homeless. Last Call is a story of having and giving up on dreams, finding yourself, and finding how God can use you in unexpected ways.

THE PLEASURE OF FINDING GOD: Finding Grace in the Ordinary (BK 8AX 177) How can anything be ordinary if we find the glory of God there? Whatever might be said of life's most thrilling or transformative moments, most of our time is spent in ordinary things. Is there glory in any of this? Where is the abundant life of which Jesus spoke? In this inspiring new work, J. Ellsworth Kalas says that the glory is found not just in the ecstasy of love or victory but in all of life, whether ecstatic or ordinary. Kalas believes it is possible to live with such joy and gladness of hearts that we find our ordinary lives graced by the pleasure of God. He offers a guide to spiritual contentment in the midst of busy lives, showing us the meaning in those seemingly small aspects of every day.

THE VERY GOOD GOSPEL: How Everything Wrong can be Made Right (BK 8AX 180) Racial discord, toxic relationships, political upheaval--we live in a fractured world. How can it be fixed? Journeying from Genesis to Revelation, this author explores the concept of shalom to show God's original intent for creation, how brokenness manifests itself in Scripture and society, and how God will bring us to wholeness.

THE BEATITUDES: Developing Spiritual Character (BK 8AA 254) The beatitudes reveal to us eight qualities that bring God's blessing: meekness and mercy, poorness in spirit and purity of heart, mourning and hunger, peacemaking and persecution. Jesus highlighted these to offer both encouragement and instruction on living distinctly as his followers in a world with values much different from God's. As we study these qualities and integrate them into our lives, we will receive the blessing Jesus promised to his followers then and now.





Lamentations and Ezekiel for Everyone (BK 8CB 002P) An Old Testament counterpart to N.T. Wright's New Testament study.

Daniel and the Twelve Prophets for Everyone (BK 8CB 002Q) An Old Testament counterpart to N.T. Wright's New Testament study,

Matthew: A Theological Commentary on the Bible (BK 8CB 082G) The author, highlights five themes that shape the distinctive portrait of Jesus this Gospel offers. Here we see Jesus facing up to conflict and controversy, ministering at the margins, overturning presuppositions about insiders and outsiders, privileging the powerless, demonstrating the authority of ethical leadership, challenging allegiance to empire, and pointing the way to a wider divine embrace than many dared imagine.

1 & 2 Timothy and Titus: A Theological Commentary on the Bible (BK 8CB 082H) Thomas G. Long's insightful commentary on the Pastoral Epistles argues that these often-neglected letters are urgently important for readers today. Some of the issues faced by New Testament churches are ours as well: the lure and peril of "spirituality" for Christians, the character of authentic worship, the qualities needed for sound leadership, and the relationship between family life and the church.

Christ in Conflict: Lessons from Jesus and His Controversies (BK 8CB 089) We often imagine Jesus as the ultimate peacemaker, as one who saw all sides and kindly overlooked differences of belief or practice. The Gospels say this was not so. Jesus drew sharp lines. He disagreed with many. He rejected being broadminded on a variety of topics. He engaged in vigorous debate, especially with several different groups of religious leaders. What conflicts did he have: He argued that we would experience a supernatural afterlife, that our natural existence is not all God has planned. He disagreed that human tradition should not supersede Scripture, our foundational authority: He clashed on whether the Bible was not an end in itself, contending that its purpose pointed beyond itself; He sharply articulated that God accept us by virtue of what we receive from him, not by what we do for him.

JOURNEYING WITH JOHN: Reflections on the Gospel (BK 8CB 090) Perfect for sermon preparation, devotion, or group study, Journeying with John offers a brief and accessible guide to the Gospel of John for learning and reflection. Following the Revised Common Lectionary, each chapter corresponds to a season of the liturgical year and the Gospel passages read during that season

MOVING MESSAGES: Ideas that will revolutionize the Sunday Experience (BK 8EF 097) Author discusses the best of what invigorated the Sunday experience for him and his congregation. Moving Messages is a must-read for all church leaders eager to make Sunday messages engaging and impactful.

PREACHING IN PICTURES: Using Images for Sermons that Connect (BK 8EF 098) The preachers' words are meant to connect, to resonate with and influence hearers. Too often, sermons fall short. This resource shows how to choose, use, and illustrate a controlling image in every sermon. Readers learn how one effective image can cause the proclaimed word to sink in and transform the listener.



During last of September or first of October, all clerks, pastors, CRE's and Christian Educators should receive a copy of the new **2016 Christmas Booklet**. Please share this with anyone at your church that will be searching for ideas for the Advent season. We have suggestions for Christmas Eve programs, Advent wreath candle readings, skits, crafts, Advent bible studies, banners, DVDs, etc. Please call, email, visit our Resource Center or check us out online at www.kiskipby.org, click on resource center for any help you may need.